

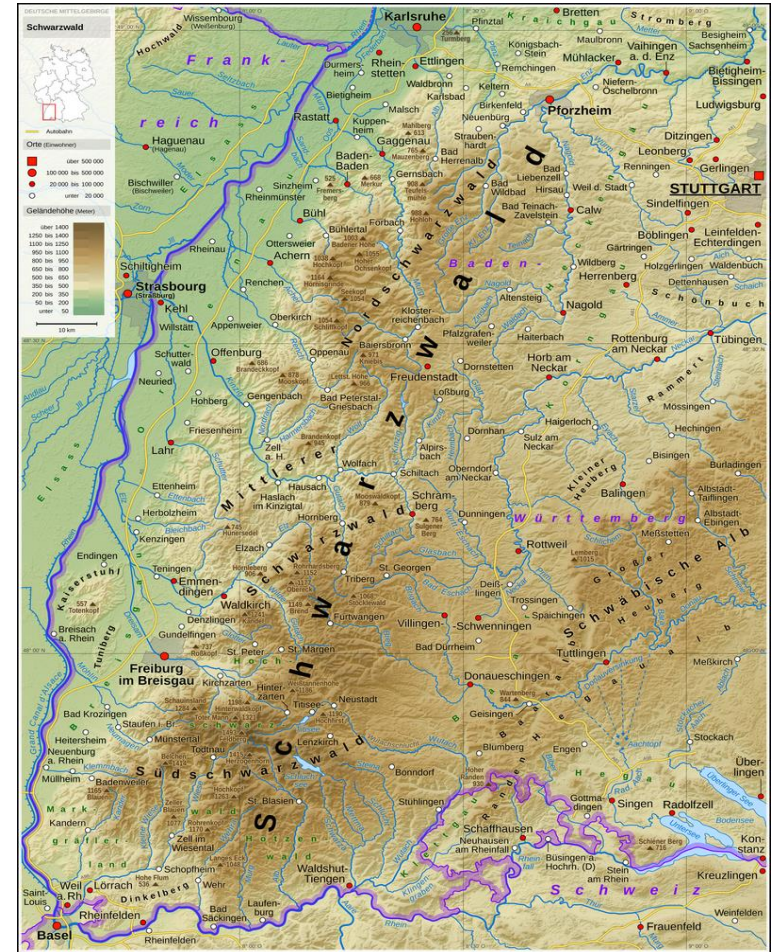
THE BLACK FOREST – A SPECIAL PLACE FOR CROSS-CLUSTER PRODUCTION

HANSJÖRG DREWELLO & TANJA KAUFMANN
8TH OF JUNE 2018

AGENDA

1. The Black Forest Region
2. Historic economic development in the Black Forest
3. Development of Black Forest Clusters today
4. Cross-Cluster-connections
5. Presentation of Porters Diamond for the region
6. Relevant trends for the future of the clusters
7. Conclusion

1 THE BLACK FOREST REGION



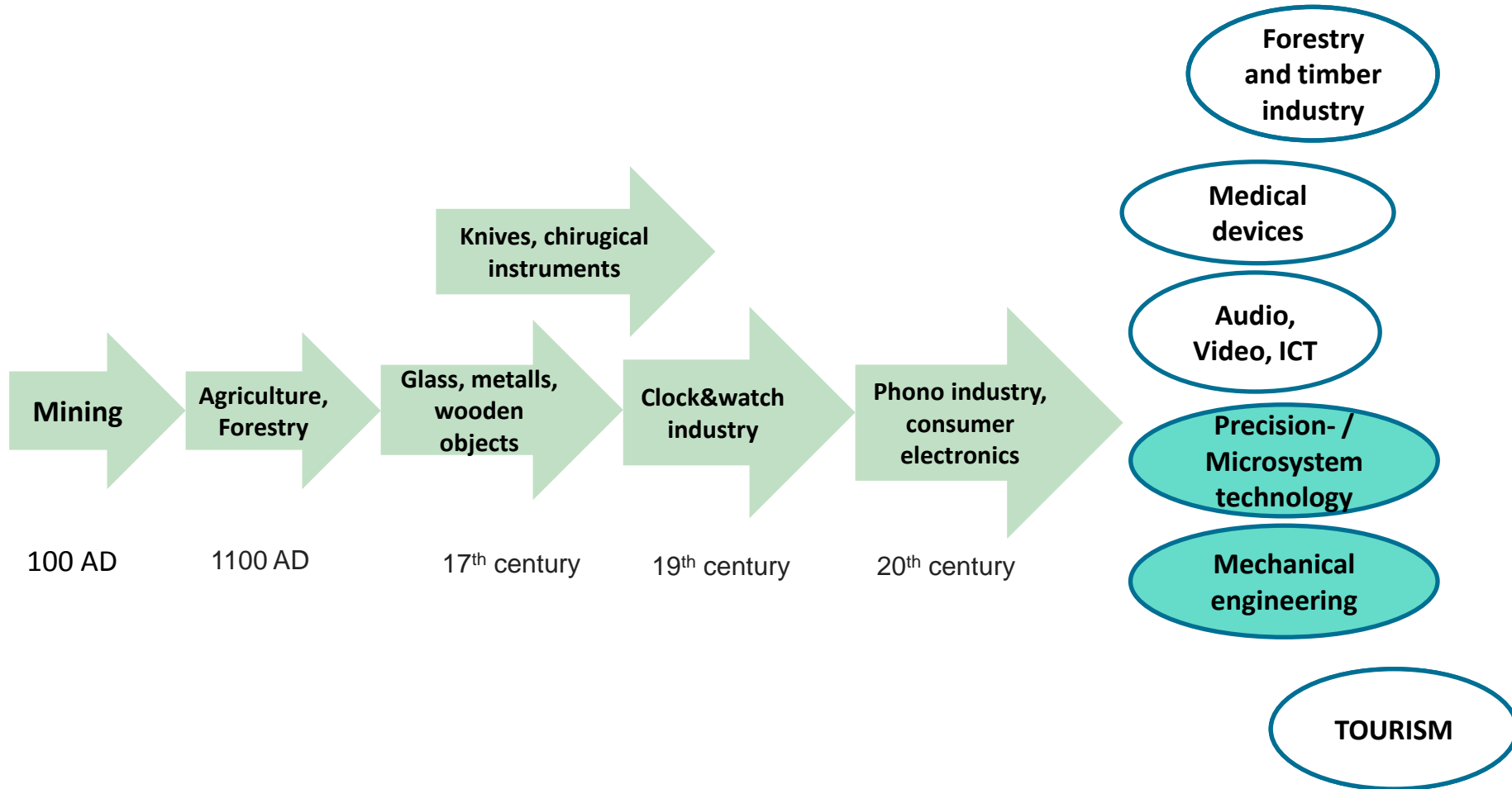
Sources: <https://www.schwarzwald-tourismus.info/schwarzwald-karte>
Thomas Römer, CC BY-SA 3.0, <https://commons.wikimedia.org/w/index.php?curid=49561686>

1 The Black Forest Region

Definition of space of analysis



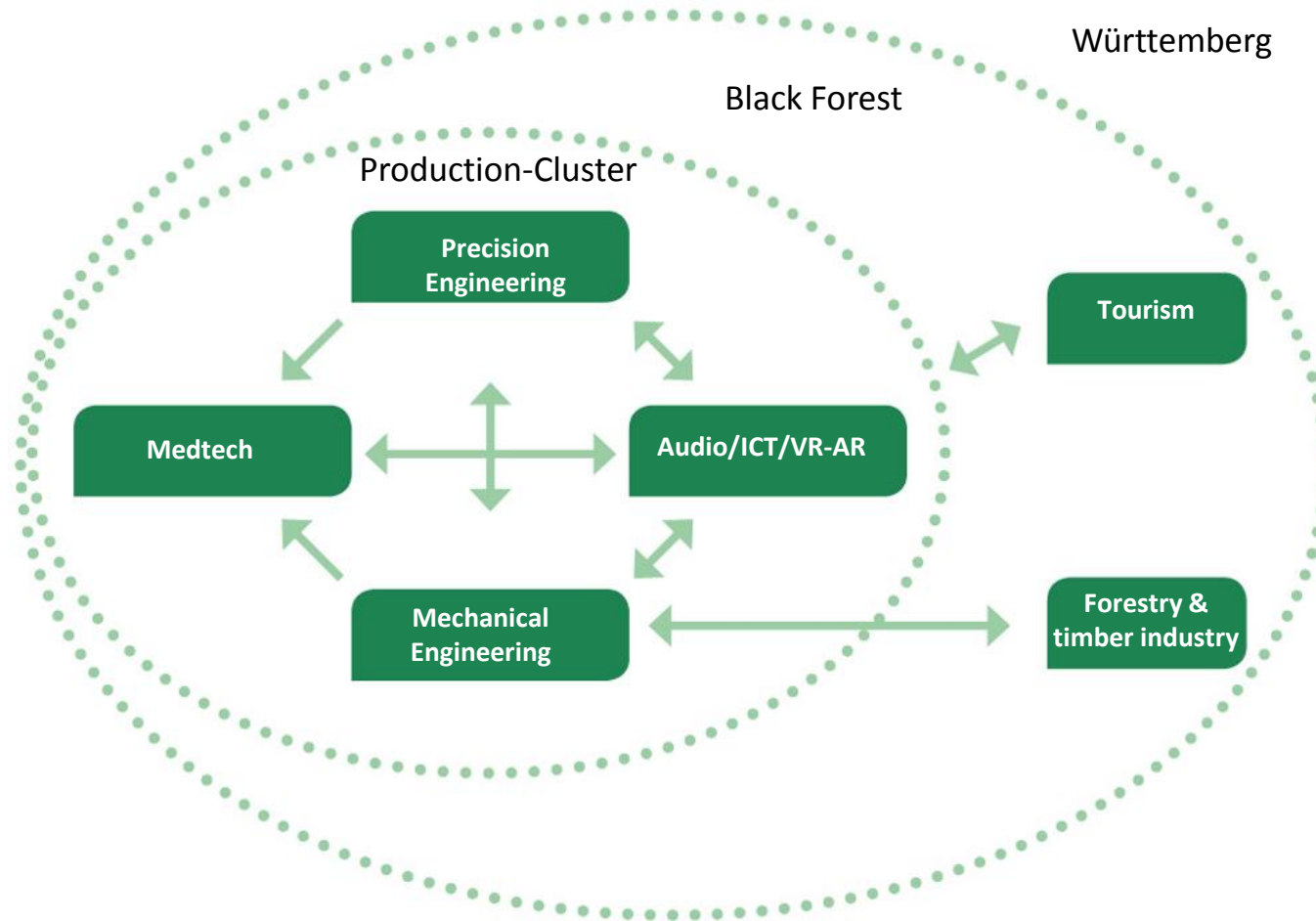
2. Historic economic development in the Black Forest



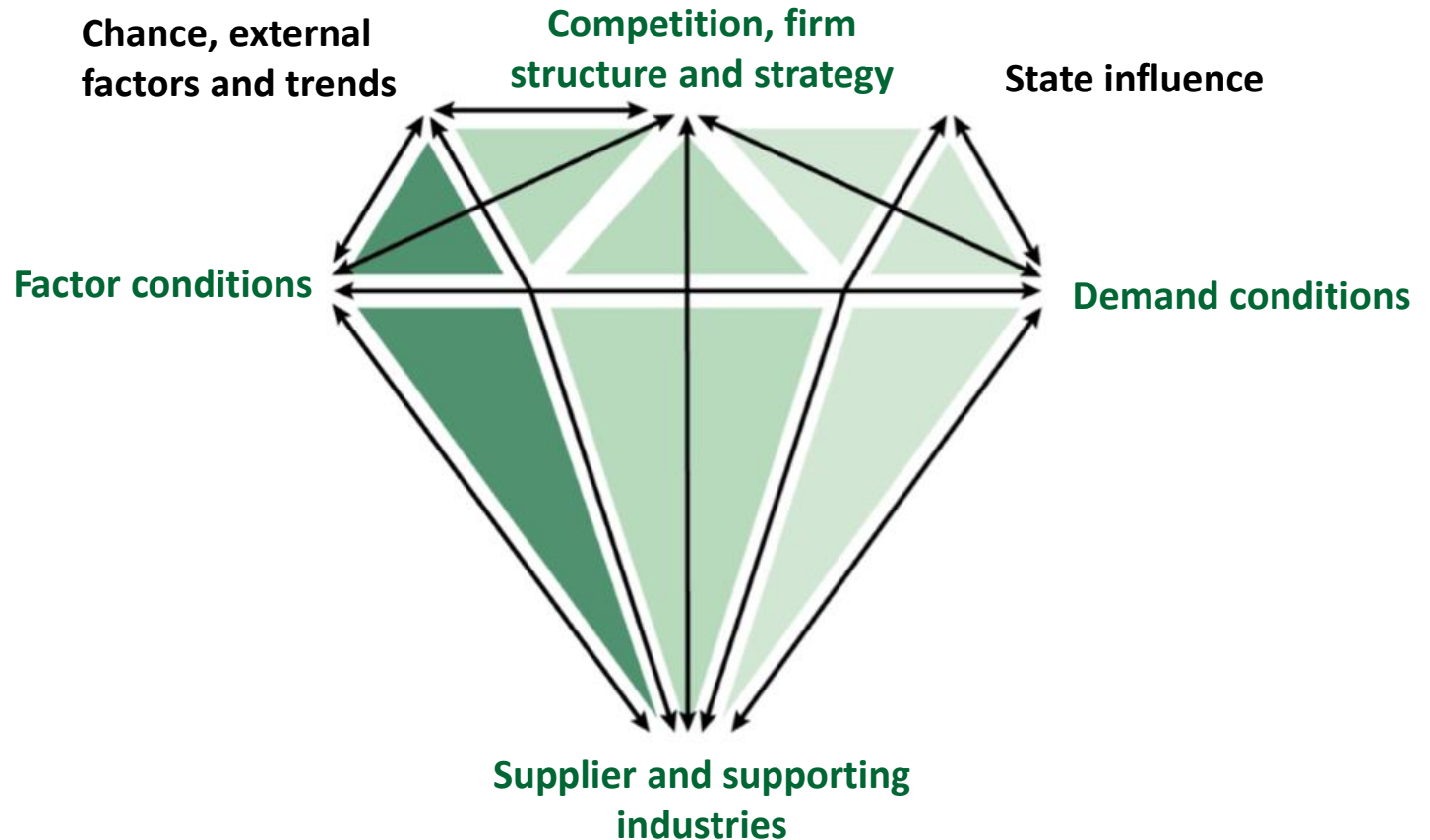
3 Development of Black Forest Clusters

Black Forest-Cluster	Employees in 2008	Employees in 2017	Change 2008 - 2017	Localization quotients for the local concentrations :
Mechanical Engineering	78.882	86.708	+9,9%	3,1 Schwarzwald-Baar, Ortenau, Freudenstadt, Lörrach, Tuttlingen
Tourism	41.276	55.402	+34,2%	2,5 Baden-Baden, Freudenstadt, Ortenau, Breisgau-Hochschwarzwald
Precision Engineering	28.721	34.997	+21,9%	4,9 Schwarzwald-Baar, Emmendingen
Audio/Information and Communication Technologies-VR	27.479	36.848	+34,1%	3,5 Karlsruhe Stadt
Forestry and timber industry	22.138	19.976	-9,8%	2,4 Waldshut, Ortenau, Calw, Freudenstadt
Medical devices	21.398	25.689	+20,1%	5,1 Tuttlingen, Schwarzwald-Baar, Rottweil

4 Cross-Cluster-Connections



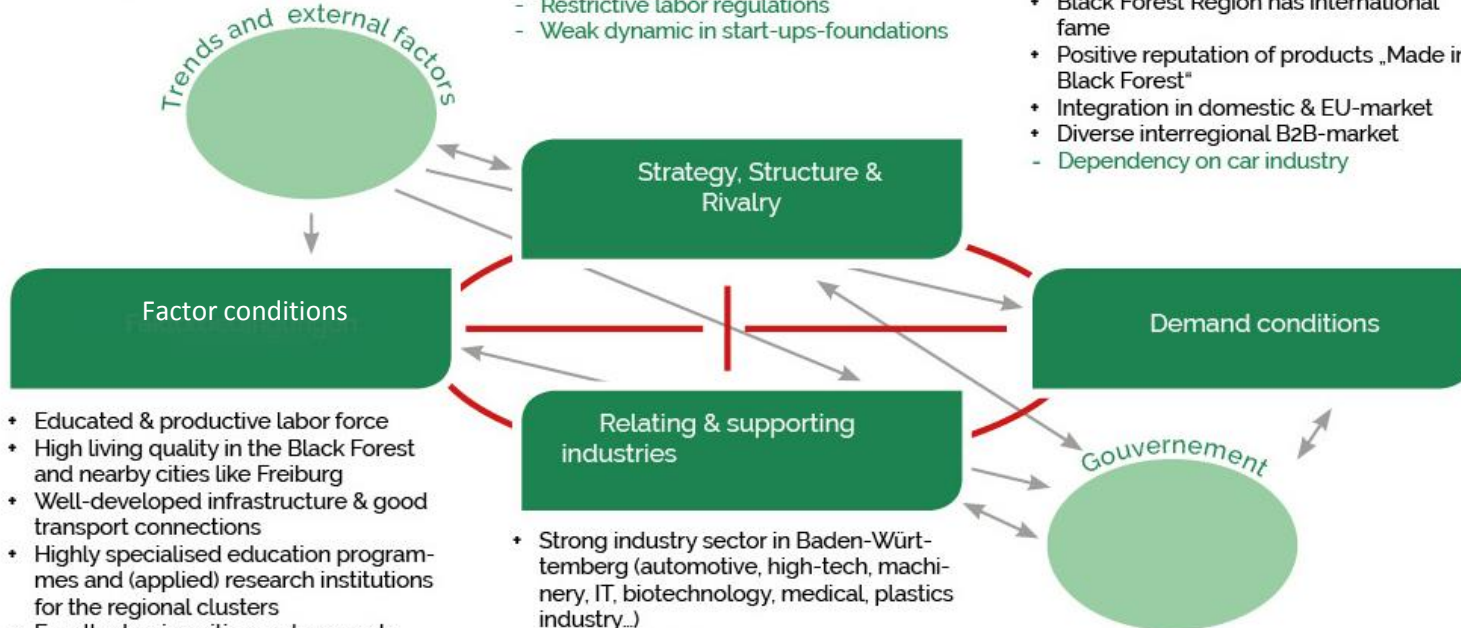
5 Presentation of Porters Diamond



- Technological trends as digitalisation, 3-D-Printing, Industry 4.0, Smart Anything Everywhere (SAE), E-Mobility
- Migration
- Individualism/nature focus
- Growing international economy
- +/- Climatic change
- Demographic development

- Position in Baden-Württemberg
- Strong local and regional rivalry, many indirect & direct competitors in niches
- Many SME's as international market leaders
- Common identity and knowledge base facilitates cooperation and open innovation
- Bureaucratic hurdles and high taxes
- Restrictive labor regulations
- Weak dynamic in start-ups-foundations

- Regional & national demand is very sophisticated and strong through inter-connected branches, through reciprocal demand of the clusters
- Proximity to clients
- Black Forest Region has international fame
- Positive reputation of products „Made in Black Forest“
- Integration in domestic & EU-market
- Diverse interregional B2B-market
- Dependency on car industry



- Educated & productive labor force
- High living quality in the Black Forest and nearby cities like Freiburg
- Well-developed infrastructure & good transport connections
- Highly specialised education programmes and (applied) research institutions for the regional clusters
- Excellent universities and research institutes
- Weak broadband
- Lack of qualified personnel
- Demographic development & attractiveness

- Strong industry sector in Baden-Württemberg (automotive, high-tech, machinery, IT, biotechnology, medical, plastics industry..)
- performant SME's
- strong business support organisations and networks
- weak service sector

- Funding programs for innovation in many future themes
- Fundings for digitalisation / Digi-Hubs
- Regional government face similar challenges as the companies
- Constructions approvals for business are in conflict with nature protection laws
- Intransparent business support landscape
- International political situation (trade wrestrictions USA, Iran)

6. Relevant trends for the future of the clusters

- Internet of Things, Cyber Physical System, Smart Everything Everywhere
- **DIGITALISATION** → concerns products, services, processes and business models in all clusters!
- 3-D-Printing, new materials, miniaturisation
- Smart Manufacturing → INDUSTRY 4.0, predictive maintenance
- Virtual, Augmented and Mixed Reality
- **SUSTAINABILITY & Ressource efficiency** → sustainable consumption, tourism, production, Energy Harvesting
- **Change in mobility** → alternative drive technologies like e-mobility, autonomous vehicles
- Social Trends : urbanisation, individualisation, demographic change

7. Conclusion

Big potential for facing future challenges together

- History of Black Forest has shaped it's clusters and their ability to adapt
- Strong advantage in the common identity & knowlege base for innovating together and use synergies
- cross-clustering could be enforced in some cases (f.ex. forestry & timber)
- The existing culture of cooperation should be used to face future challenges like digitalisation and develop „Black Forest Solutions“ to the technological and social trends

BLACK FOREST 
DIAMOND

THANK YOU FOR YOUR
ATTENTION!